

# ***INTELLISPEC™***

## **Case Pack Inspection/ Rejecter**

Pressco Technology Inc.

**71953 Rev. 01**



Addendum

---

© 2013 Pressco Technology Inc. All rights reserved.

No part of this manual may be reproduced or transmitted in any form or by any means, electronic or mechanical, including photocopying and recording, for any purpose, without the express written permission of Pressco Technology Inc.

The contents of this manual are furnished for informational use only, are subject to change without notice, and should not be construed as a commitment by Pressco Technology Inc.

Written and designed at:

Pressco Technology Inc. World Headquarters

29200 Aurora Road

Cleveland, OH USA 44139-1847

TEL 440-498-2600

FAX 440-498-2615

[www.pressco.com](http://www.pressco.com)

# Table of Contents

---

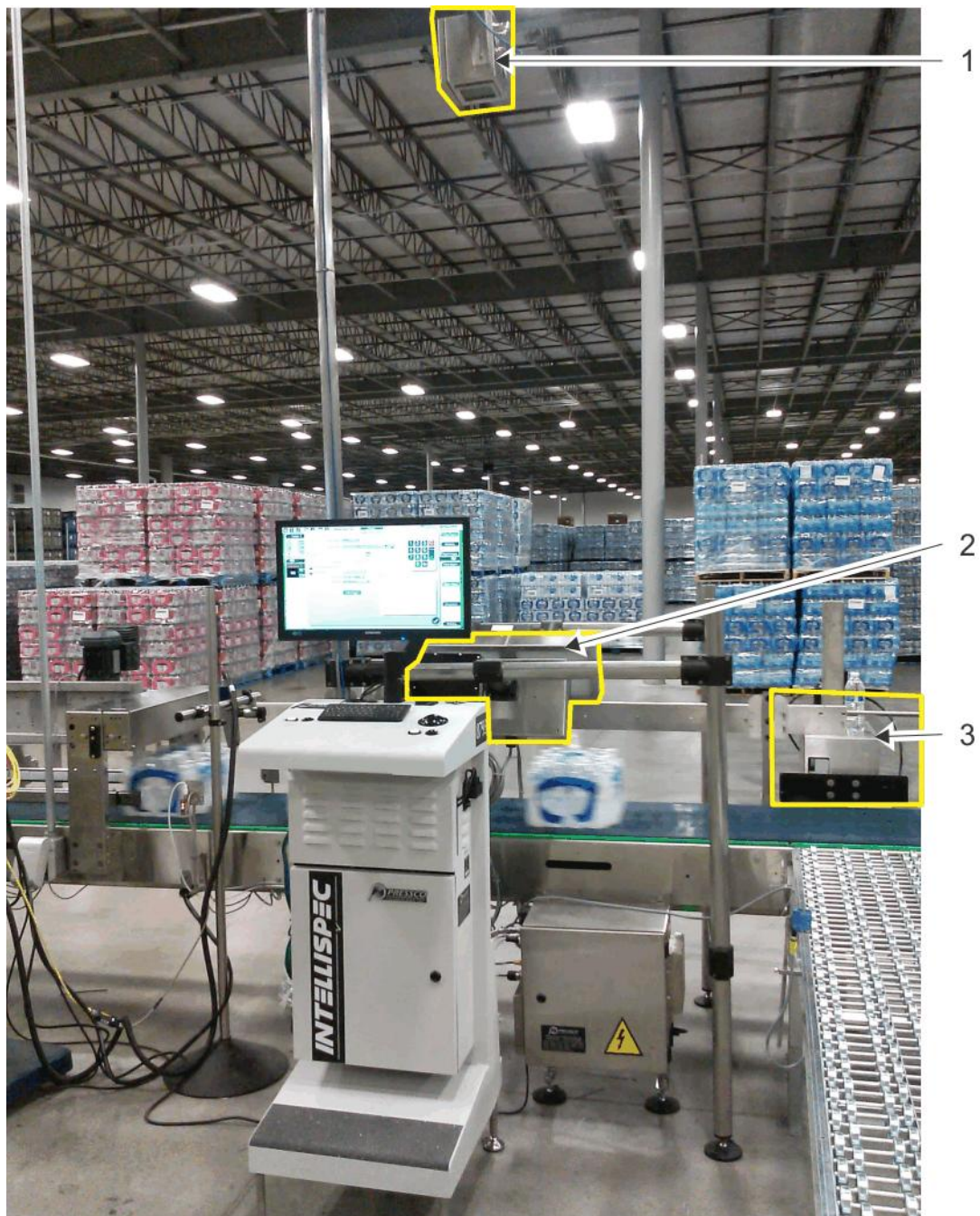
- Chapter 1 Case Pack Inspection/ Rejection Modules.....3**
- Inspection example.....4
- Label Inspection Module.....5
- Rejector Module .....6
- Index .....7**



# Chapter 1

## CASE PACK INSPECTION/ REJECTION MODULES

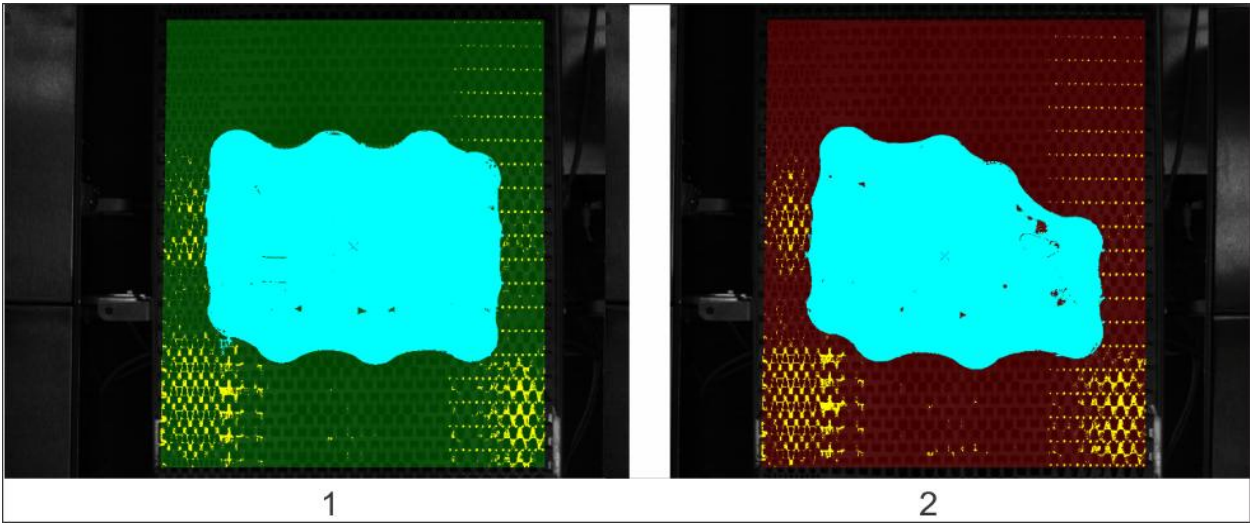
Refer to the illustration below. On a conveyor line, an inspection module [item 1] and lighting modules [item 2] are located on the conveyor prior to the rejector [item 3] to determine whether the bottle case is acceptable.



1	Inspection module
2	Lighting modules
3	Rejector module

# INSPECTION EXAMPLE

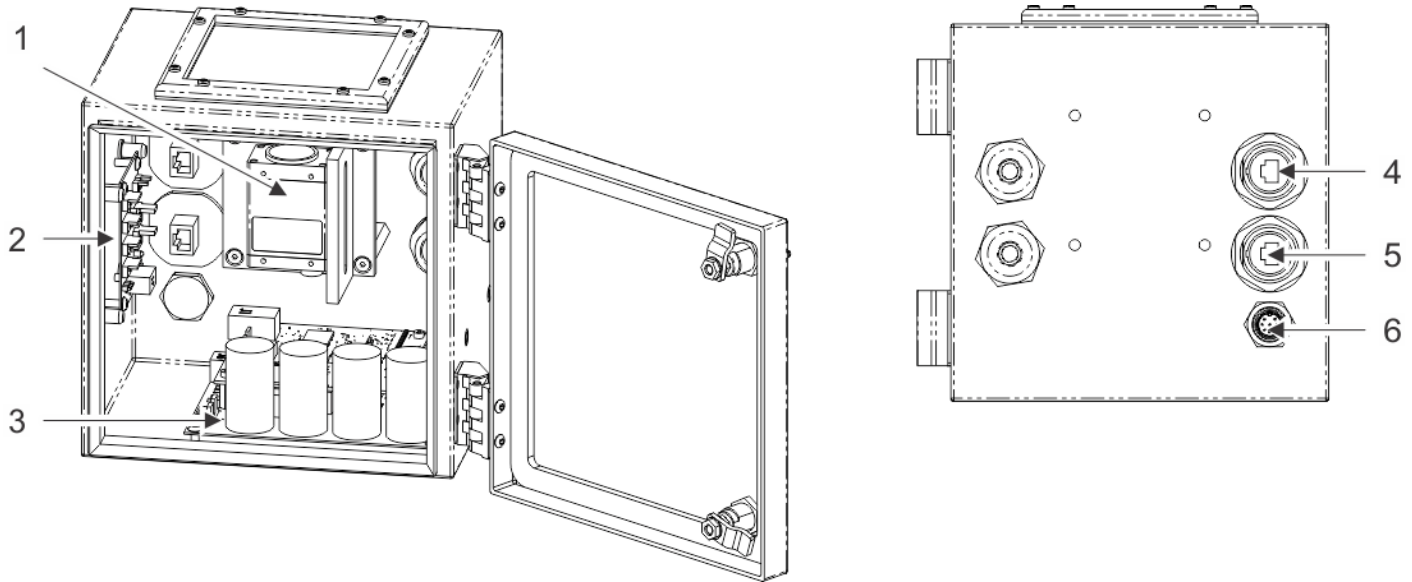
The inspection module takes a picture of the case on the conveyor. In the example below, the inspection uses a Feature Registration to locate the part. The registration counts pixels within a certain grayscale range. The pixels highlighted in blue fall within this range. If the pixel count does not fall within your specified limits, the part (or case) fails. The failed case [item 2] gets rejected off the conveyor.



1	Good case
2	Defective case - not enough pixels (bottles)

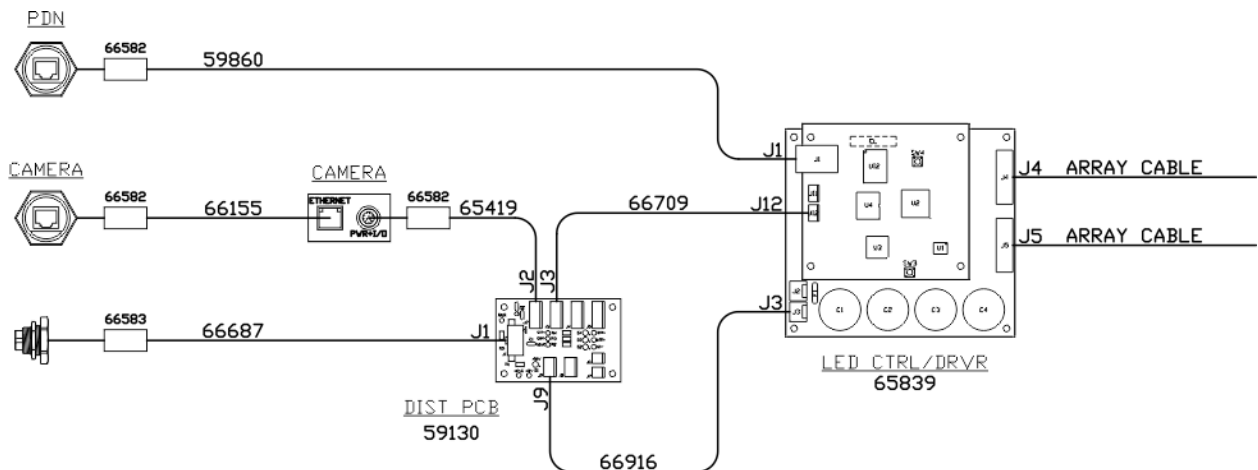
# LABEL INSPECTION MODULE

The inspection module is mounted above the conveyor to make sure the cases are completely full. The module is shown below.



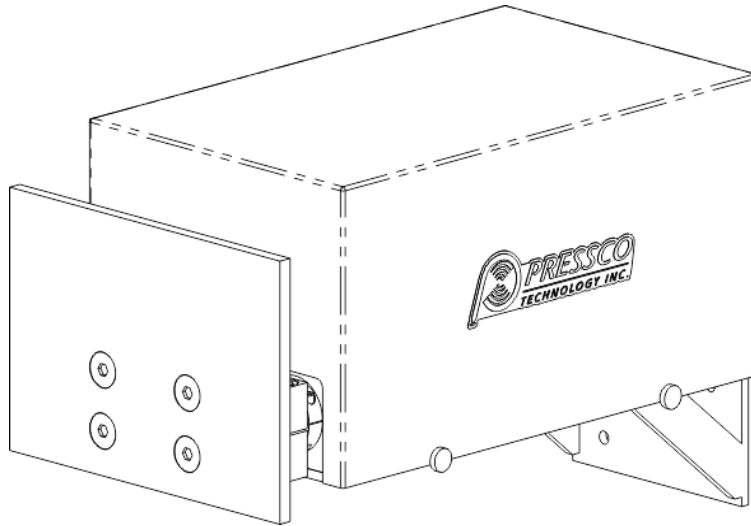
1	PD2 Camera (F1435)
2	Signal distribution board (59130)
3	Driver/ light control board (66459)
4	Camera connection (blue wire)
5	PDN connection (green wire)
6	Trigger/ power connection

## Wiring diagram - label inspection module



# REJECTOR MODULE

The rejector module is mounted on a conveyor line to push off cases of bottles that do not meet your standards.



## Specifications

The following items are required to install and operate the case pack rejector:

- Compressed air: 25 SCFM @ 80 psi
- 6 inch stroke

# INDEX

---

## C

CASE PACK INSPECTION/ REJECTION MODULES • 3

## I

INSPECTION EXAMPLE • 4

## L

LABEL INSPECTION MODULE • 5

## R

REJECTOR MODULE • 6

## S

SPECIFICATIONS • 6

## W

WIRING DIAGRAM - LABEL INSPECTION MODULE • 5